



world
class
winches

Hydraulic Planetary Gear Winches

H100PX

Grooved for 14 mm rope Type No 63.31-056

10 TONNES WINCH WITH ROPE PAY-ON DEVICE



Pulling force

| | | |
|---------------------|-------------|------------|
| - bottom rope layer | 10.0 tonnes | 22 500 Lbs |
| - top rope layer | 6.5 tonnes | 14 600 Lbs |

Rope speed

| | | |
|---------------------|-----------|-----------|
| - bottom rope layer | 6.0 m/min | 20 ft/min |
| - top rope layer | 9.5 m/min | 31 ft/min |

Rope speed in high auto 2-speed

| | | |
|---------------------|-----|-----|
| - bottom rope layer | n/a | n/a |
| - top rope layer | n/a | n/a |

Max oil pressure

200 bar 2900 psi

Max oil flow

60 l/min 16 gal/min

Drum diameter

224 mm 8.82 inch

Rope diameter

14 mm 0.55 inch

(Acc. to DIN 14584, MBL \geq 197 kN)

Rope length

80 m 262 ft

Numbers of layers

6 6

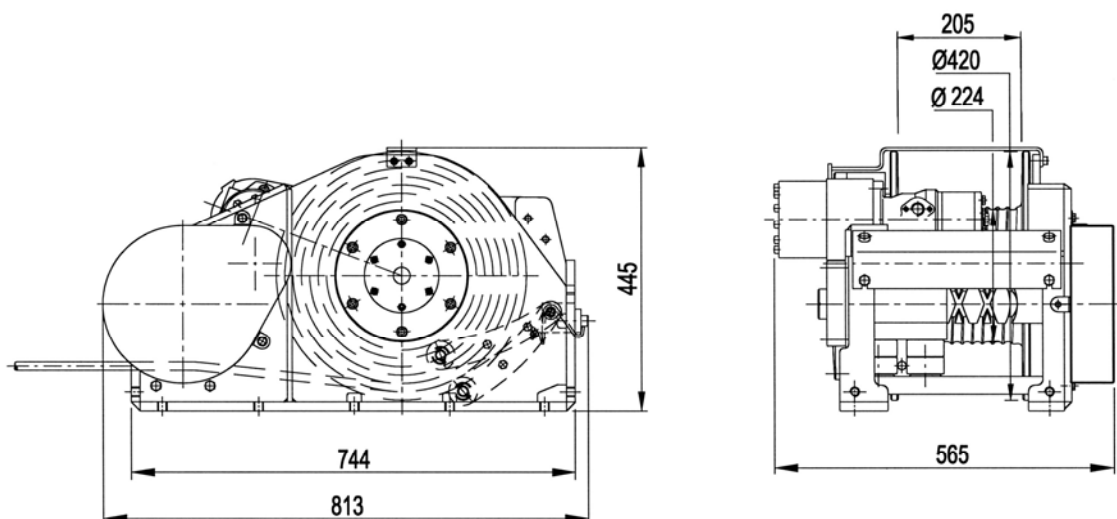
Winch weight

256 kg 575 Lbs

Rope weight

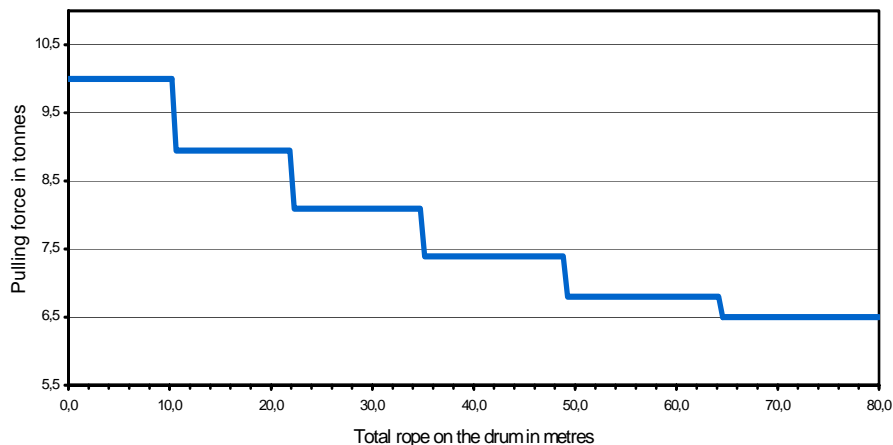
80 kg 180 Lbs

Dimensional drawing (dimensions in mm)



Pulling force over the rope length

| | Pulling force (tonnes) | Rope speed (m/min) | Total Rope on the drum (m) |
|-----|------------------------|--------------------|----------------------------|
| 1st | 10,0 | 6,0 | 10,4 |
| 2nd | 8,9 | 7,0 | 22,1 |
| 3rd | 8,1 | 7,5 | 34,9 |
| 4th | 7,4 | 8,0 | 49,0 |
| 5th | 6,8 | 9,0 | 64,4 |
| 6th | 6,5 | 9,5 | 80,9 |

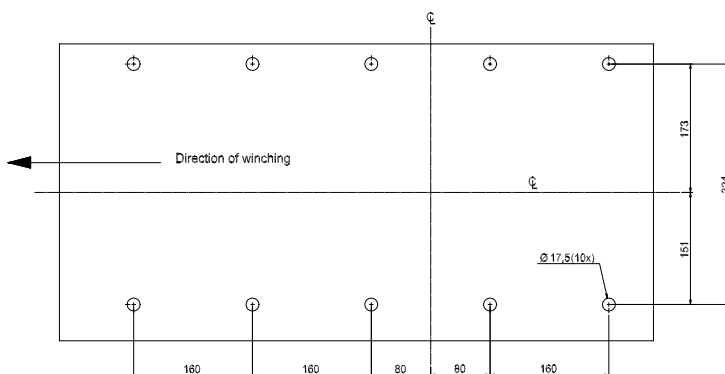


Mounting instructions

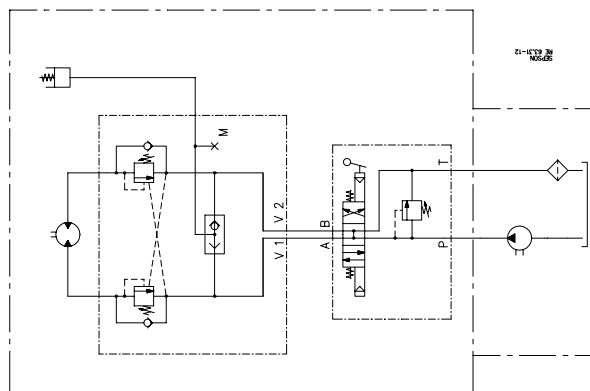
The winch should be mounted on a 16 mm steel mounting plate fixed to the vehicle.

The winch must be fitted to the mounting plate with 10 bolts M6S M16x40 (hot galvanized) minimum quality 8.8.

Tightening torque 210 Nm (21 kpm) when oiled.



Hydraulic installation



Declaration of Conformity

According to the Machine Directive 98/37/EC, Annex IIA

Sepson AB, P.O. Box 172, SE-780 50 Vansbro, Sweden declare under our sole responsibility that:

The winch type 63.31 with serial numbers 1010-1962

- are manufactured according to the Machine Directive 98/37/EC
- are manufactured according to following harmonized standards – EN 292-1 and 2

Vansbro December 9, 2005. **Sepson AB** Ulf Jons Designer

May 2006