



world
class
winches

Hydraulic Planetary Gear Winches

H50PE

Manual freespool clutch
Pneumatic freespool clutch

Type No 73.07-033
Type No 73.07-034

5 TONNES WINCH WITH EXTENDED ROPE DRUM



Pulling force

| | | |
|---------------------|------------|------------|
| - bottom rope layer | 5.0 tonnes | 11 200 Lbs |
| - top rope layer | 3.6 tonnes | 8 100 Lbs |

Rope speed

| | | |
|---------------------|------------|-----------|
| - bottom rope layer | 12.0 m/min | 39 ft/min |
| - top rope layer | 17.0 m/min | 56 ft/min |

Rope speed in high auto 2-speed

| | | |
|---------------------|-----|-----|
| - bottom rope layer | n/a | n/a |
| - top rope layer | n/a | n/a |

Max oil pressure

200 bar 2900 psi

Max oil flow

60 l/min 16 gal/min

Drum diameter

126 mm 4.96 inch

Rope diameter

14 mm 0.55 inch

(Acc. to DIN 14584, MBL \geq 98 kN)

Rope length

30 m 98 ft

Numbers of layers

3 3

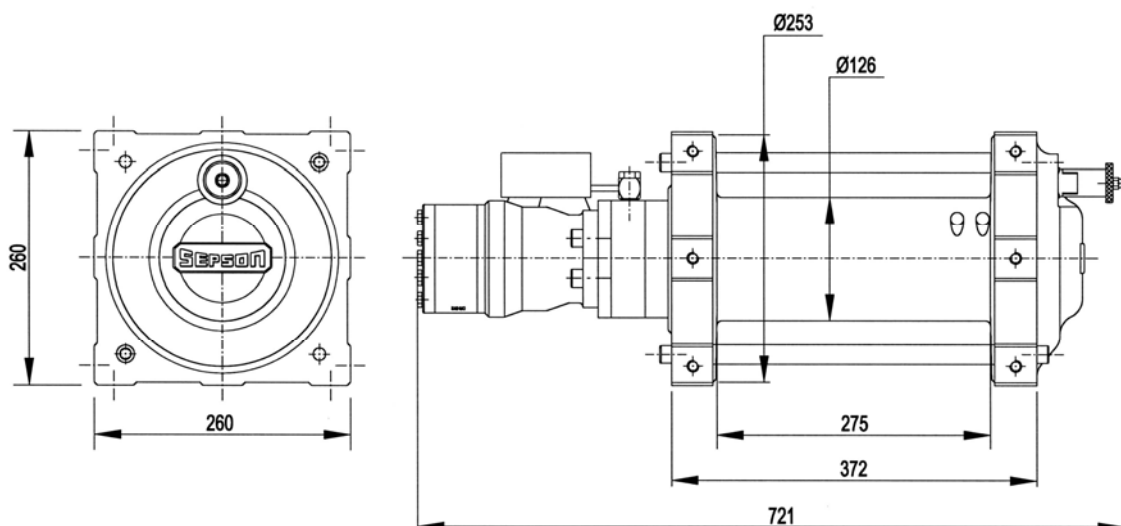
Winch weight

60 kg 135 Lbs

Rope weight

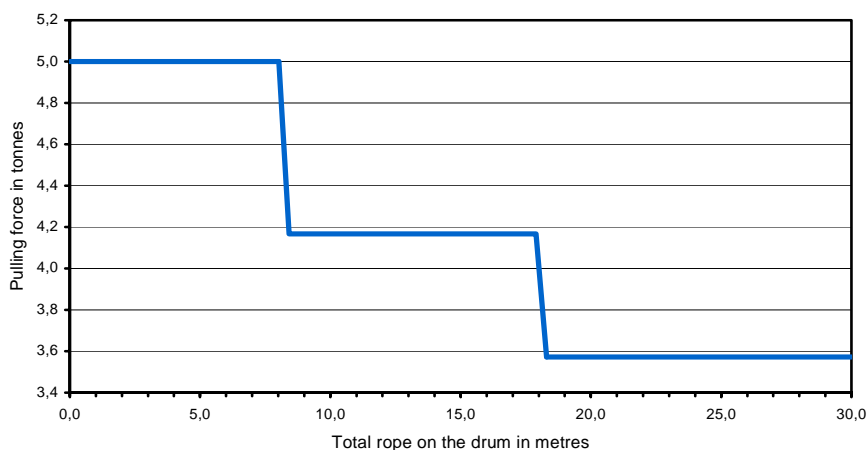
25 kg 56 Lbs

Dimensional drawing (dimensions in mm)



Pulling force over the rope length

| | Pulling force (tonnes) | Rope speed (m/min) | Total Rope on the drum (m) |
|-----|------------------------|--------------------|----------------------------|
| 1st | 5,0 | 12,0 | 8,2 |
| 2nd | 4,2 | 14,5 | 18,1 |
| 3rd | 3,6 | 17,0 | 29,6 |

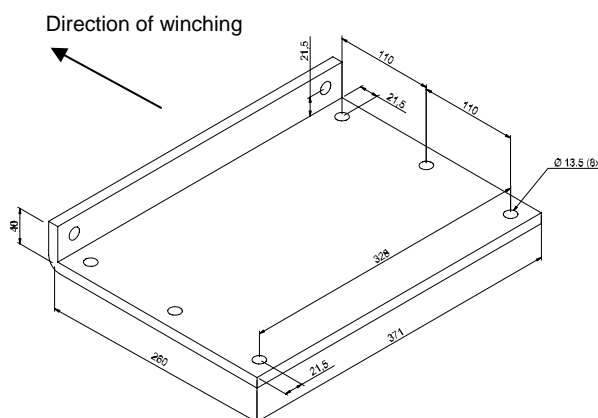


Mounting instructions

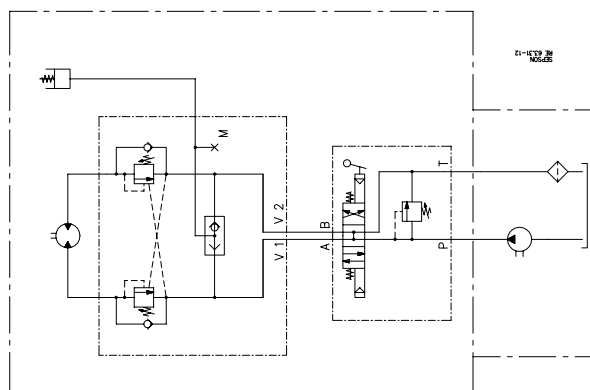
The winch should be mounted on a 12 mm steel mounting plate fixed to the vehicle.

The winch must be fitted to the mounting plate with 8 bolts M6S M12x35 (hot galvanized) minimum quality 8.8.

Tightening torque 124 Nm (12.4 kpm) when oiled.



Hydraulic installation



Declaration of Conformity

According to the Machine Directive 98/37/EC, Annex IIA

Sepson AB, P.O. Box 172, SE-780 50 Vansbro, Sweden declare under our sole responsibility that:

The winch type 73.07 with serial numbers 846-1786

- are manufactured according to the Machine Directive 98/37/EC
- are manufactured according to following harmonized standards – EN 292-1 and 2

Vansbro December 9, 2005. **Sepson AB** Ulf Jons Designer